



What are the signs?

Look for early warning signs that patients may complain of...



Mouth Cancer is a malignant growth which can occur in any part of the mouth, tongue and lips.

Mouth ulcer.

Ask: "How long have you had this?"

- If less than 3 weeks, treat as mouth ulcer
- If ulcer persists more than 3 weeks, refer patient to Maxillofacial department using fast track procedure

Red or white patch in the mouth.

Lump, swelling or thickening on lips or in mouth.

Unusual numbness in the mouth.

Refer patient to Maxillofacial dept. using fast track procedure

Difficulty chewing or swallowing.

Ask: "How long have you had this?"

- If less than 3 weeks, usual advice for these symptoms
- If difficulty persists more than 3 weeks, refer patient to Maxillofacial dept. using fast track procedure

Persistent hoarseness or sore throat.

Ask: "How long have you had this?"

- If less than 6 weeks, usual advice for these symptoms
- If difficulty persists more than 6 weeks, refer patient to Maxillofacial dept. using fast track procedure

Advise patients living in the Bradford & Airedale area who:

- are looking for a dentist to call **PALS** on **01274 237555**
- need emergency dental treatment but do not have a dentist to call **NHS Direct** on **0845 1203 200**

Produced in partnership by:

Bradford Salaried Dental Service, Oral Health Promotion. Tel 01274 223937

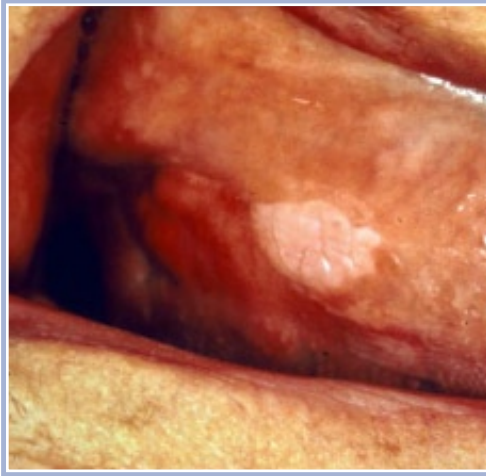
Airedale Salaried Dental Service, Oral Health Promotion. Tel 01535 654666

Bradford and Airedale



Teaching Primary Care Trust

Examples of how mouth cancer may present...



KEY MESSAGES FOR PATIENTS

- Stop smoking or chewing tobacco completely
- Keep within safe limits for drinking alcohol
- Have a healthier 'low meat, low fat' diet, rich in vegetables & fruit with servings of bread, cereals or beans every day
- Look in your mouth. If you notice anything abnormal, go to your dentist or doctor at once.
- Everyone should visit a dentist regularly for a check up — your dentist will advise you on recall intervals